

Komi: 0.0

Diagram 1

Black to play.

<https://gogameguru.com/>

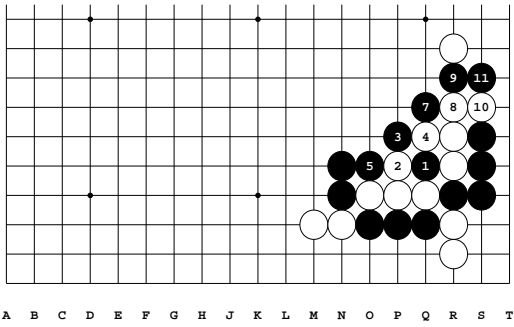
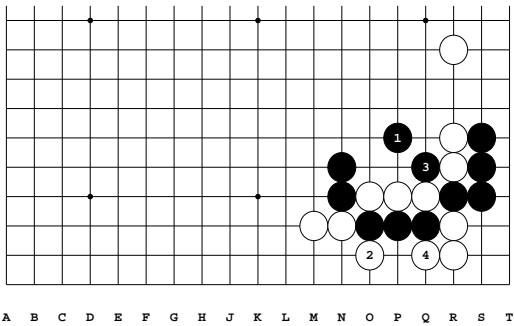


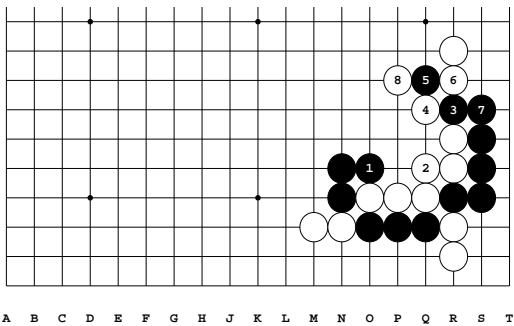
Diagram 2: 1-11

⊙ at ●

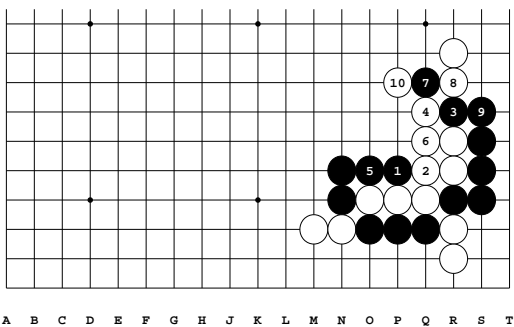
11: Correct



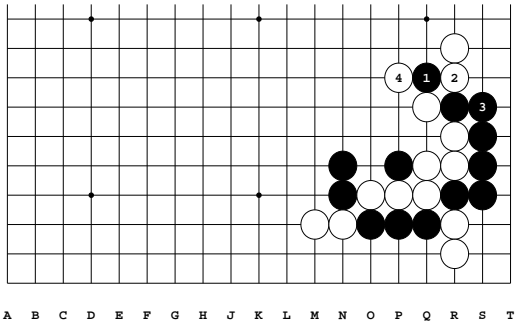
Variation 1 at move 1 in Diagram 2: 1-4



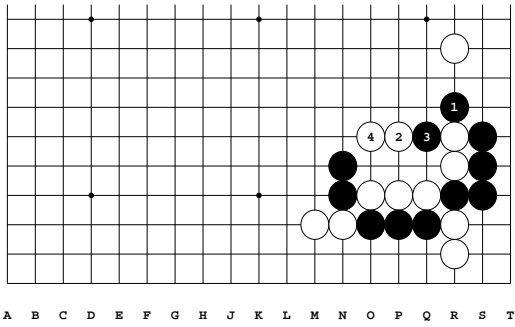
Variation 2 at move 1 in Diagram 2: 1-8



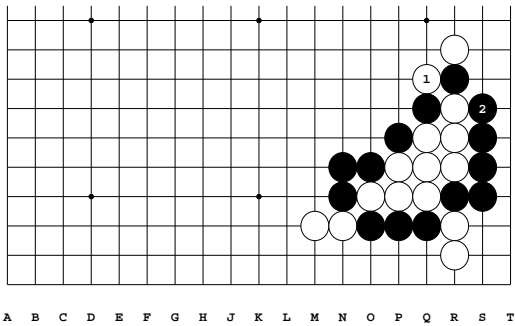
Variation 3 at move 1 in Diagram 2: 1-10



Variation 4 at move 5 in Variation 3: 1-4

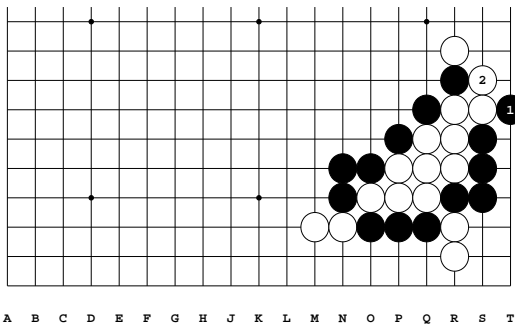


Variation 5 at move 1 in Diagram 2: 1-4

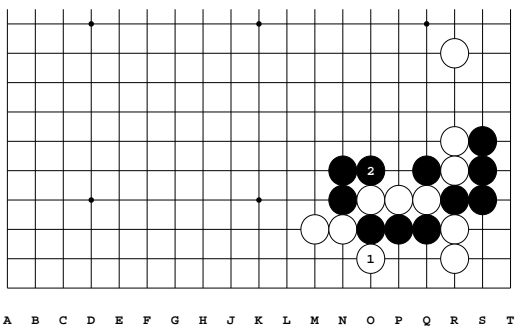


Variation 6 at move 10 in Diagram 2: 1-2

2: Correct

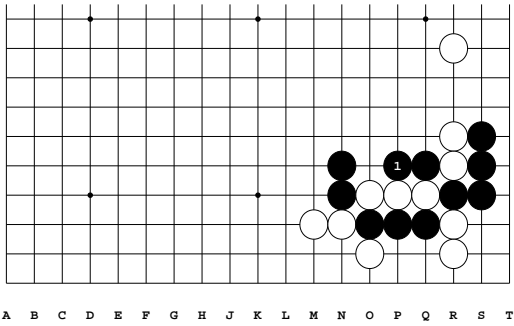


Variation 7 at move 11 in Diagram 2: 1-2



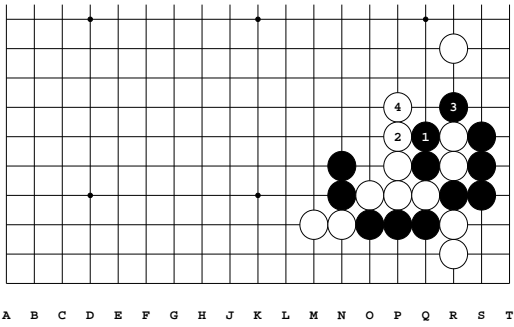
Variation 8 at move 2 in Diagram 2: 1-2

2: Correct



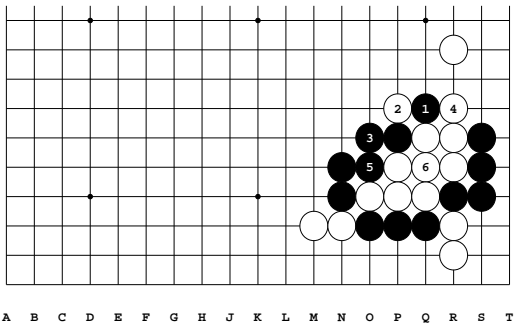
Variation 9 at move 2 in Variation 8: 1

1: Correct

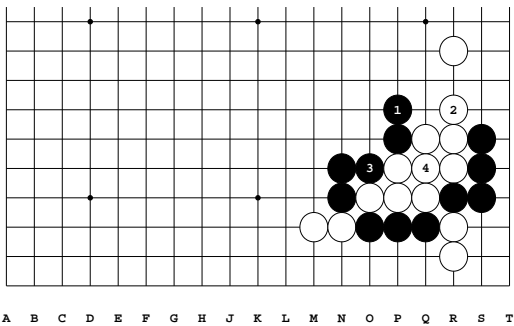


Variation 10 at move 3 in Diagram 2: 1-4

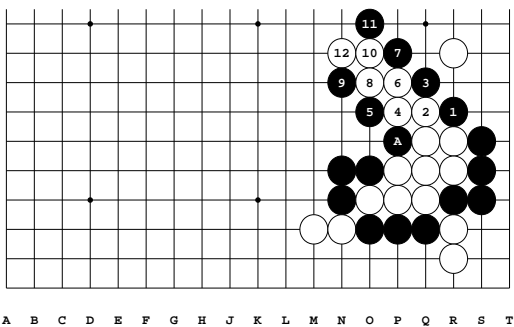
4: Black can do better.



Variation 11 at move 5 in Diagram 2: 1-6

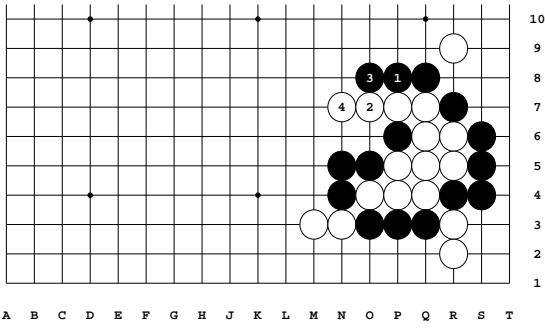


Variation 12 at move 5 in Diagram 2: 1-4

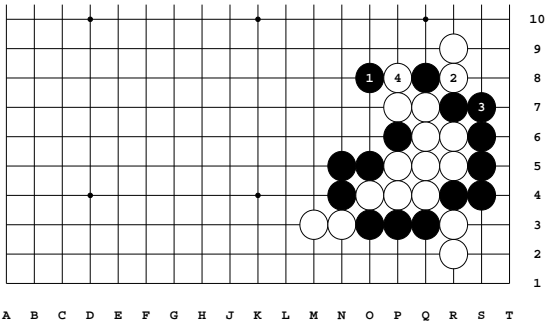


Variation 13 at move 7 in Diagram 2: 1-12

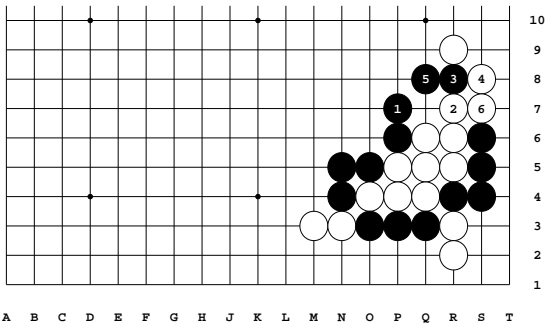
12: This ladder doesn't work for Black, because Black A is in atari.



Variation 14 at move 5 in Variation 13: 1-4



Variation 15 at move 5 in Variation 13: 1-4



Variation 16 at move 7 in Diagram 2: 1-6