

Komi: 0.0

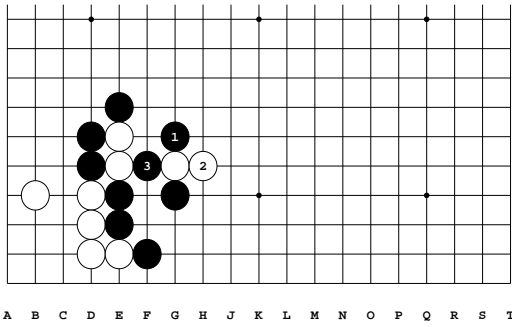
Diagram 1

Black to play.

White A would have been better at B. Why?

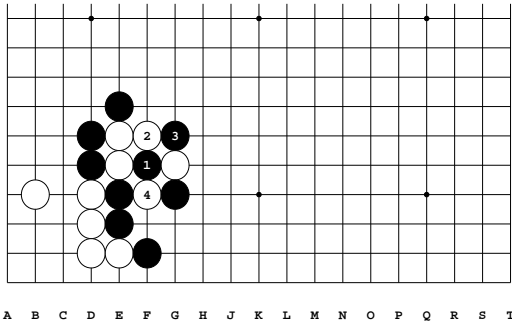
<https://gogameguru.com/>

Diagram 2: 1-3



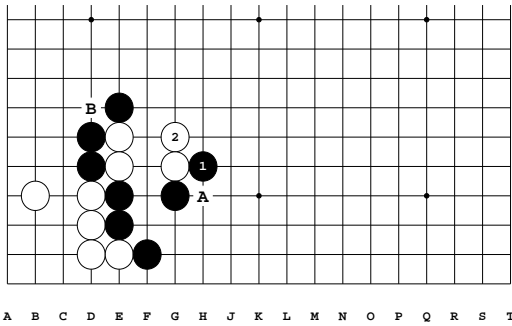
3: Correct

Variation 1 at move 1 in Diagram 2: 1-4



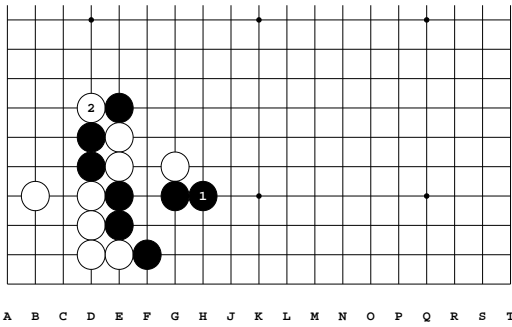
4: This is a mess. Black has a move that settles things in a simple and clean manner.

Variation 2 at move 1 in Diagram 2: 1-2

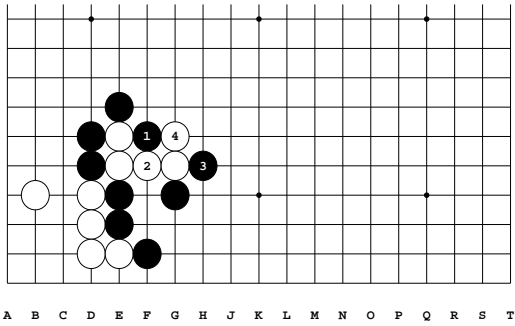


2: Next White can cut at A or B, so the position becomes very difficult for Black.

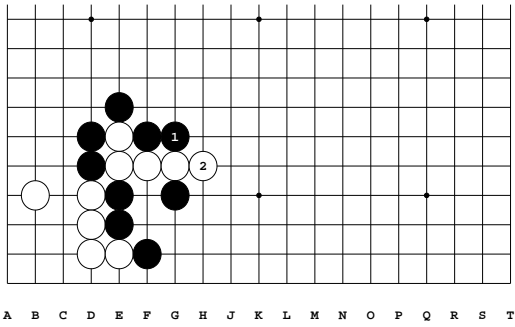
Variation 3 at move 1 in Diagram 2: 1-2



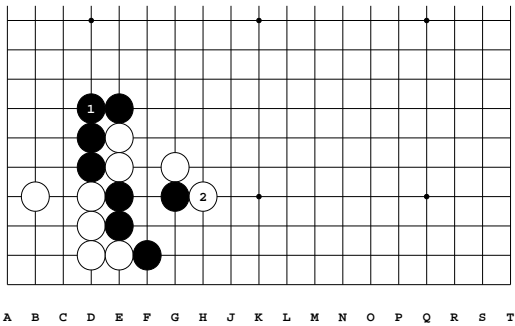
2: Black's missed a great opportunity. White can even cut here now.



Variation 4 at move 1 in Diagram 2: 1-4

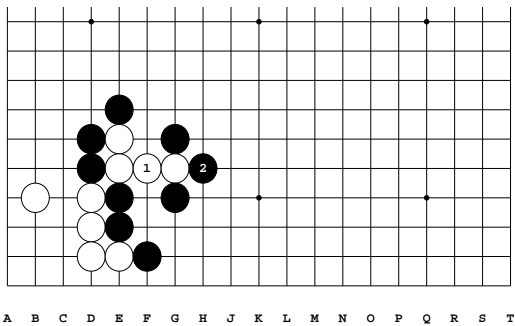


Variation 5 at move 3 in Variation 4: 1-2



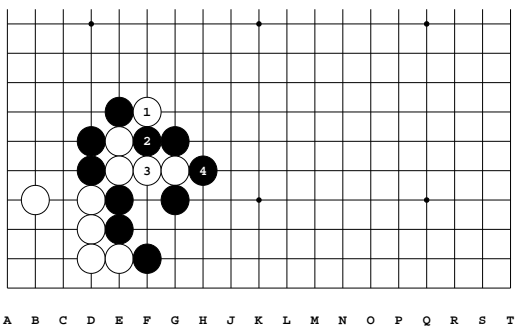
Variation 6 at move 1 in Diagram 2: 1-2

2: Black defended the left side, but White can play here now.



Variation 7 at move 2 in Diagram 2: 1-2

2: Correct



Variation 8 at move 2 in Diagram 2: 1-4

4: Correct