

Komi: 0.0

Diagram 1

Black to play.

<https://gogameguru.com/>

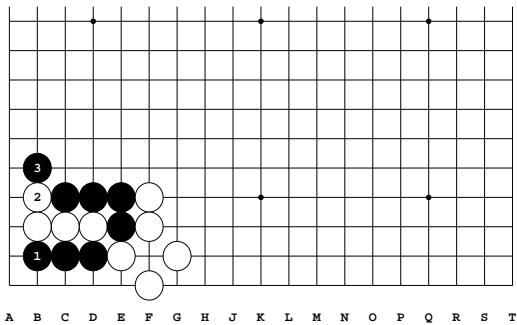
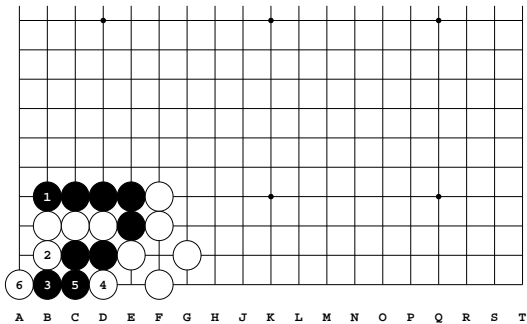
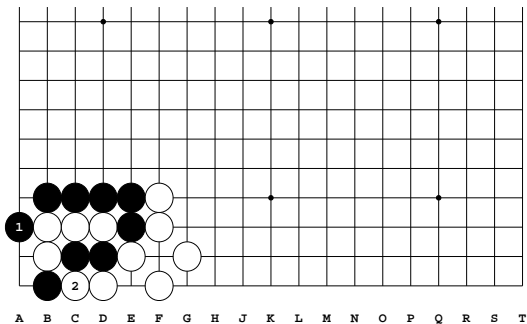


Diagram 2: 1-3

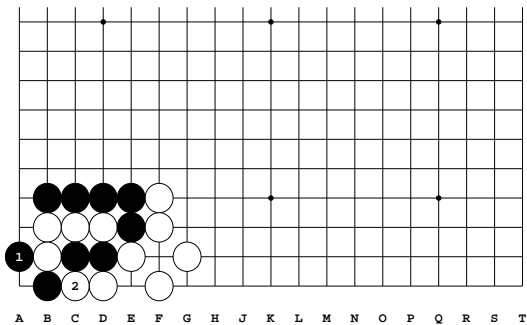
3: Correct. White only has two liberties and all of Black's groups have more than that. No matter what White does next, Black can atari.



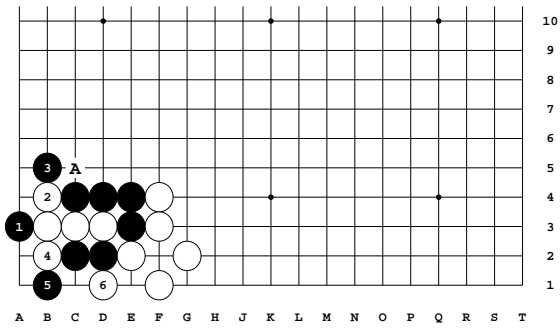
Variation 1 at move 1 in Diagram 2: 1-6



Variation 2 at move 5 in Variation 1: 1-2



Variation 3 at move 5 in Variation 1: 1-2



### Variation 4 at move 1 in Diagram 2: 1-6

6: This variation is even worse for Black than the previous one because White's stones are safe and Black still has to worry about White cutting at A.