

Komi: 0.0

Diagram 1

Black to play.

<https://gogameguru.com/>

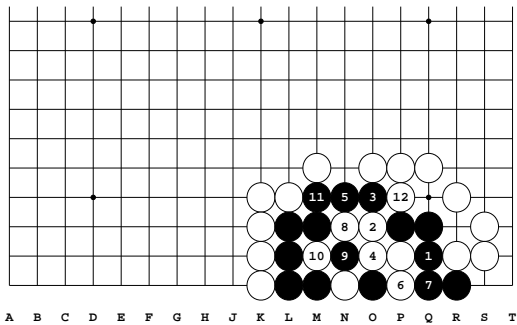
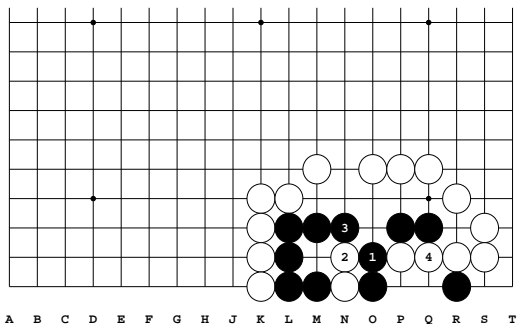


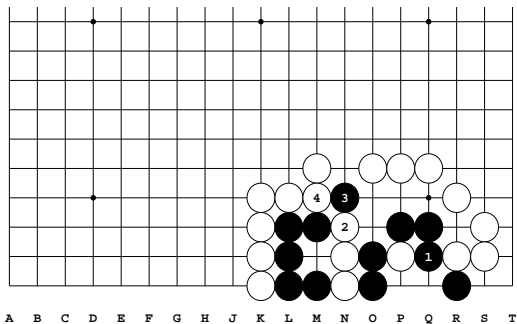
Diagram 2: 1-13

13 at 9

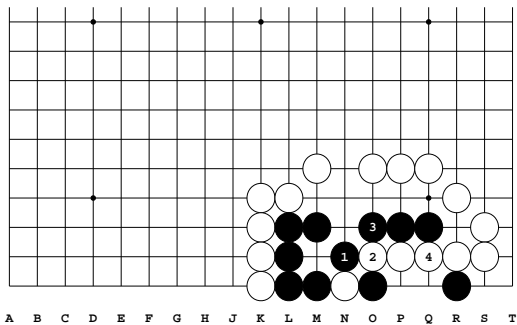
13: Correct



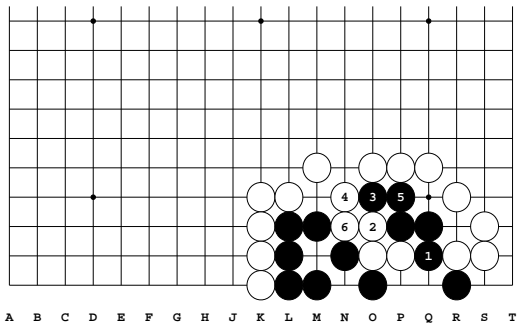
Variation 1 at move 1 in Diagram 2: 1-4



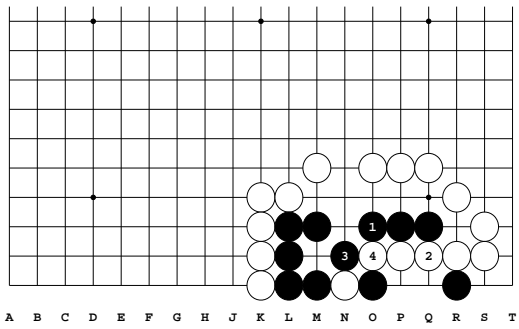
Variation 2 at move 3 in Variation 1: 1-4



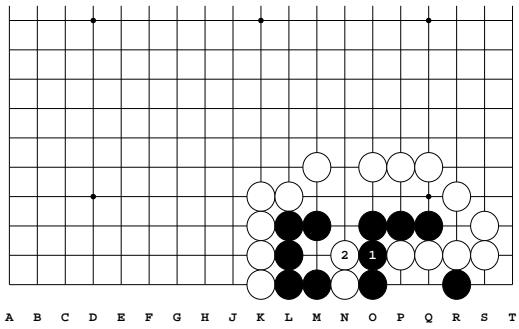
Variation 3 at move 1 in Diagram 2: 1-4



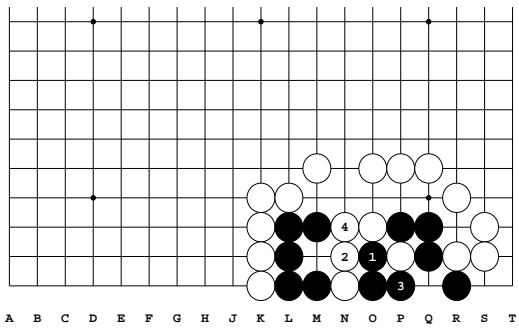
Variation 4 at move 3 in Variation 3: 1-6



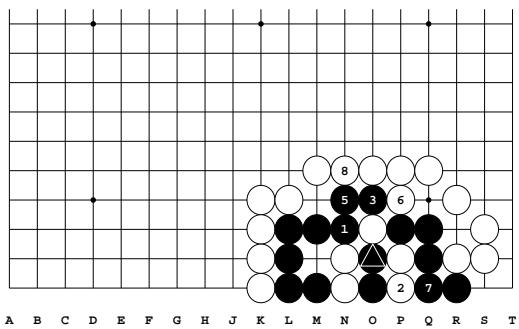
Variation 5 at move 1 in Diagram 2: 1-4



Variation 6 at move 3 in Variation 5: 1-2

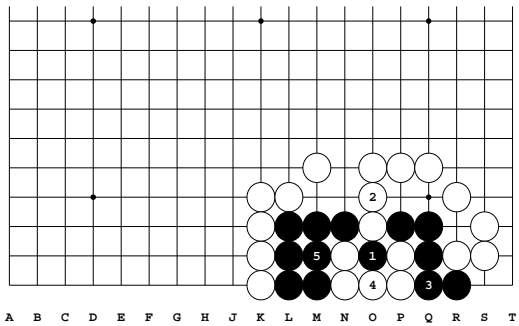


Variation 7 at move 3 in Diagram 2: 1-4



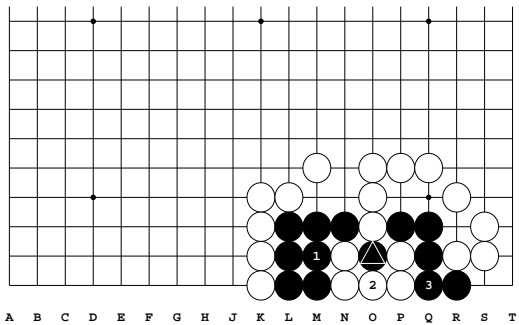
Variation 8 at move 3 in Variation 7: 1-8

④ at ▲



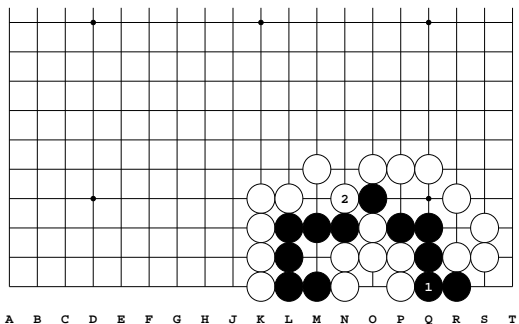
Variation 9 at move 3 in Variation 8: 1-6

⊙ 6 at ⊙ 1

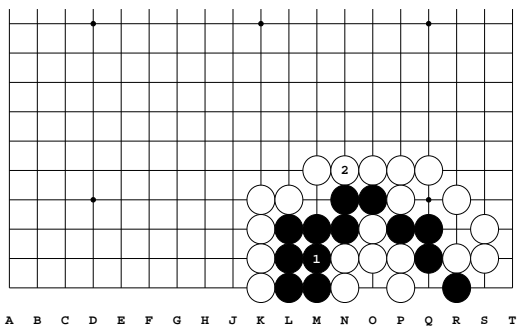


Variation 10 at move 3 in Variation 9: 1-4

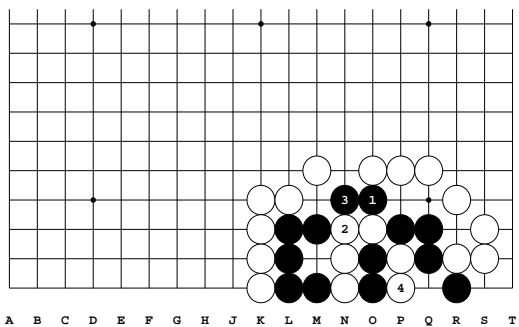
⊙ 4 at ⊙



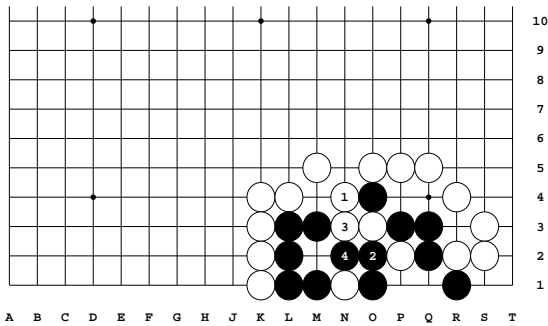
Variation 11 at move 5 in Variation 8: 1-2



Variation 12 at move 7 in Variation 8: 1-2



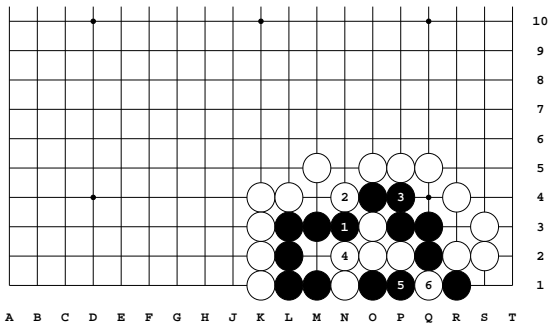
Variation 13 at move 3 in Variation 7: 1-4



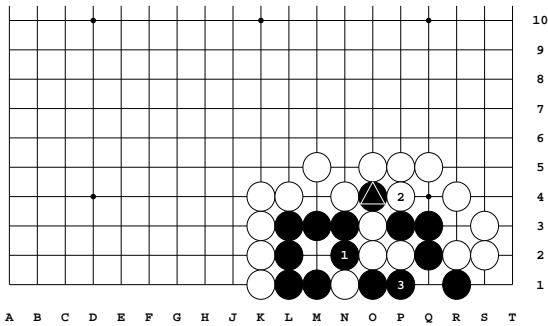
Variation 14 at move 4 in Diagram 2: 1-4

1: White 4 here doesn't work...

4: Correct

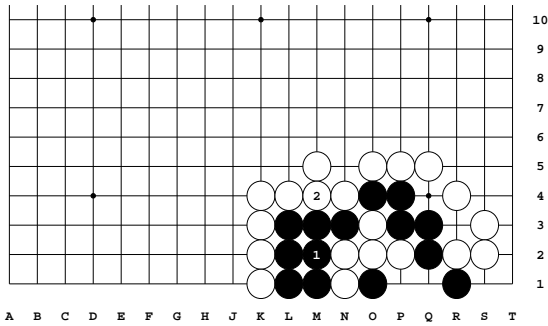


Variation 15 at move 5 in Diagram 2: 1-6

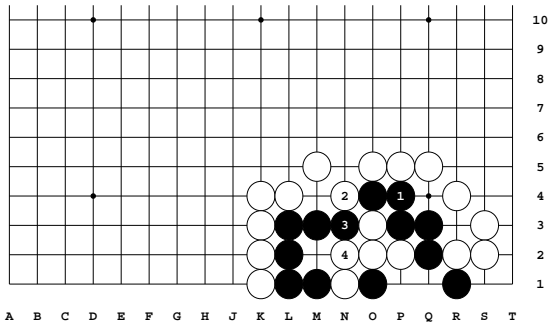


Variation 16 at move 3 in Variation 15: 1-4

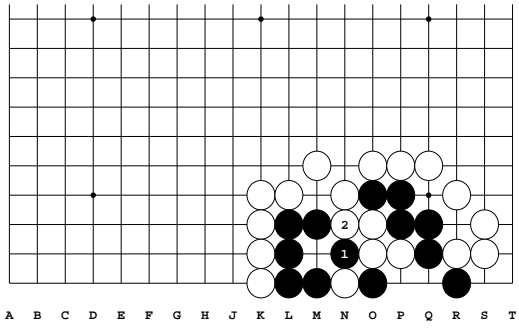
④ at ▲



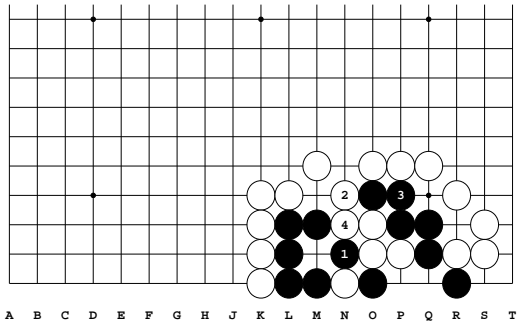
Variation 17 at move 5 in Variation 15: 1-2



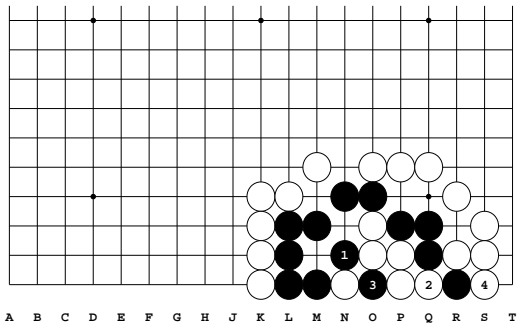
Variation 18 at move 5 in Diagram 2: 1-4



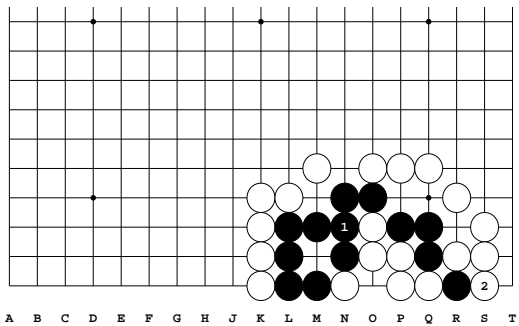
Variation 19 at move 3 in Variation 18: 1-2



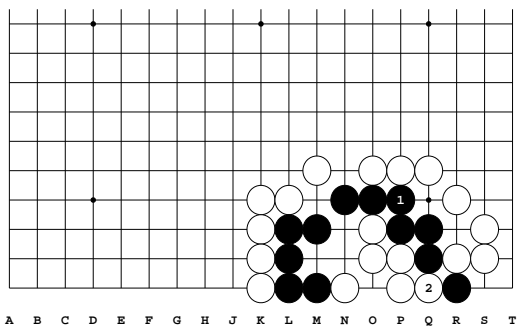
Variation 20 at move 5 in Diagram 2: 1-4



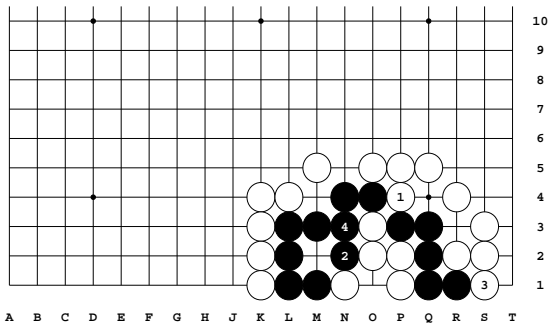
Variation 21 at move 7 in Diagram 2: 1-4



Variation 22 at move 3 in Variation 21: 1-2

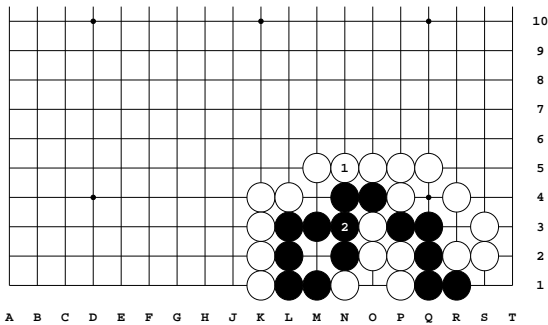


Variation 23 at move 7 in Diagram 2: 1-2



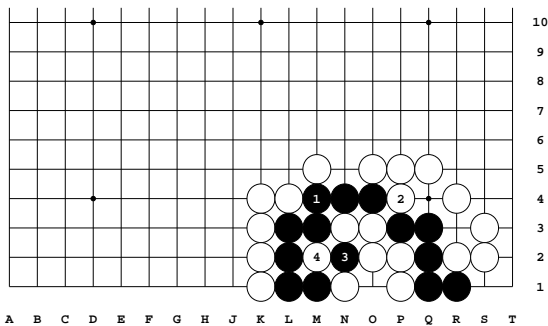
Variation 24 at move 8 in Diagram 2: 1-4

4: Correct



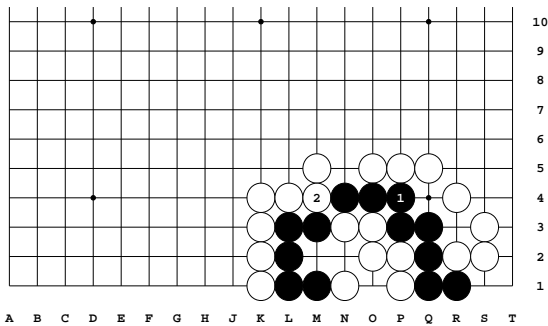
Variation 25 at move 3 in Variation 24: 1-2

2: Correct



Variation 26 at move 9 in Diagram 2: 1-4

4: Almost correct. Is there a way for Black to take the ko first?



Variation 27 at move 9 in Diagram 2: 1-2