

Komi: 0.0

Diagram 1

Black to play.

<https://gogameguru.com/>

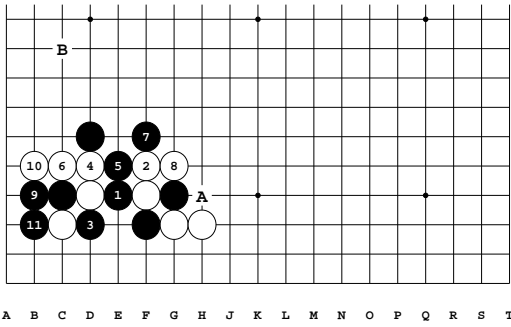
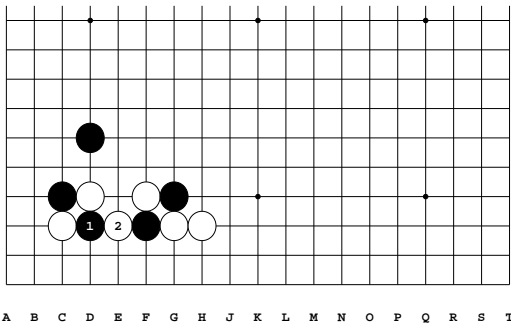
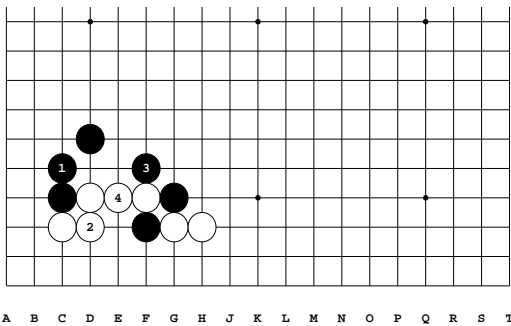


Diagram 2: 1-11

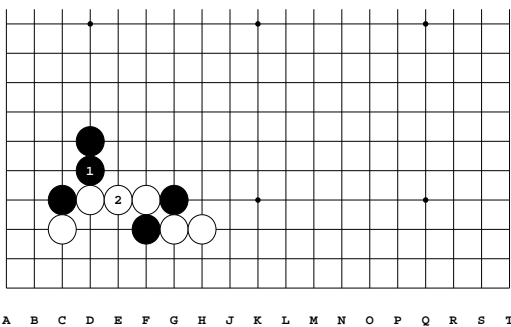
11: Correct. A and B are miai for Black next.



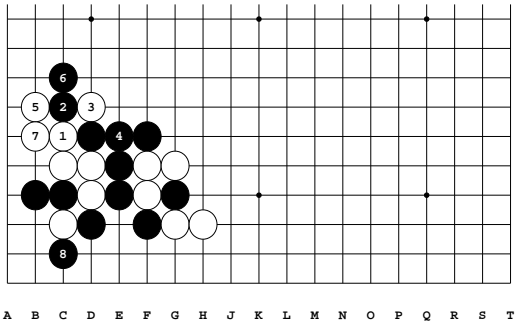
Variation 1 at move 1 in Diagram 2: 1-2



Variation 2 at move 1 in Diagram 2: 1-4

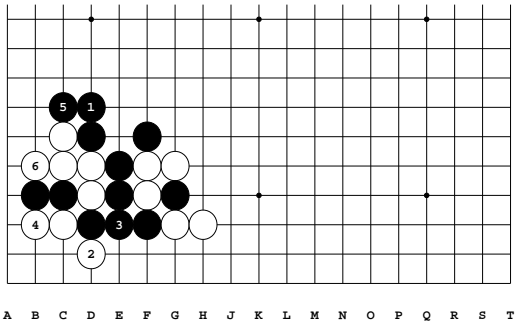


Variation 3 at move 1 in Diagram 2: 1-2

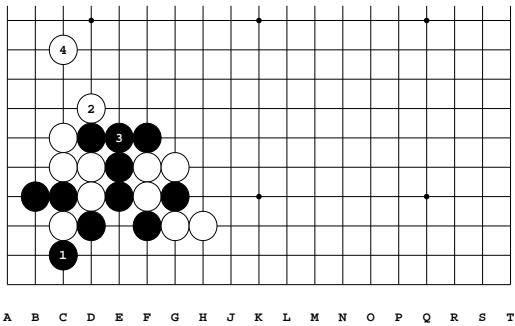


Variation 4 at move 10 in Diagram 2: 1-8

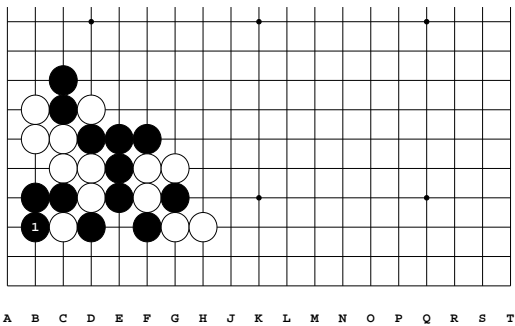
8: Correct



Variation 5 at move 2 in Variation 4: 1-6

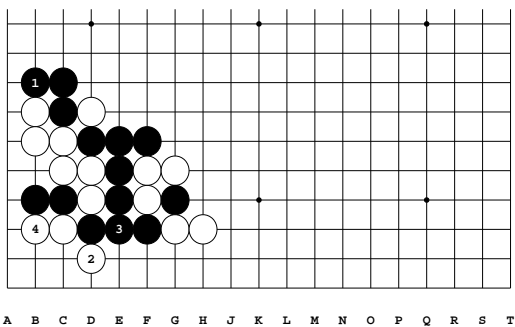


Variation 6 at move 2 in Variation 4: 1-4

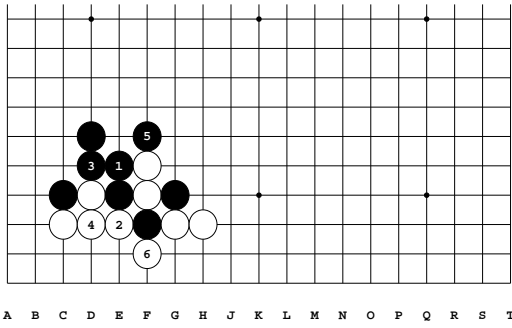


Variation 7 at move 8 in Variation 4: 1

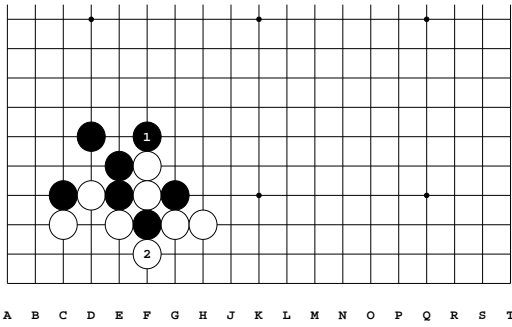
1: Correct



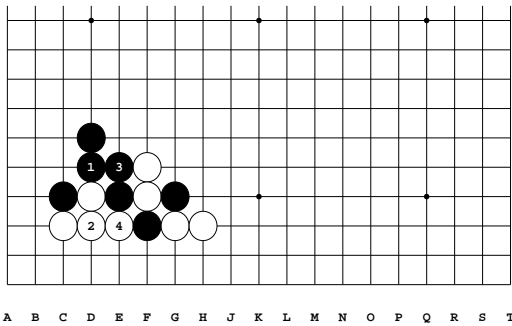
Variation 8 at move 8 in Variation 4: 1-4



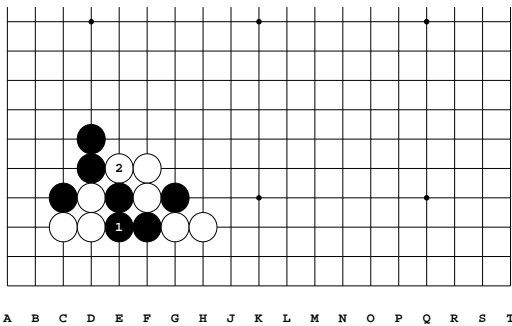
Variation 9 at move 3 in Diagram 2: 1-6



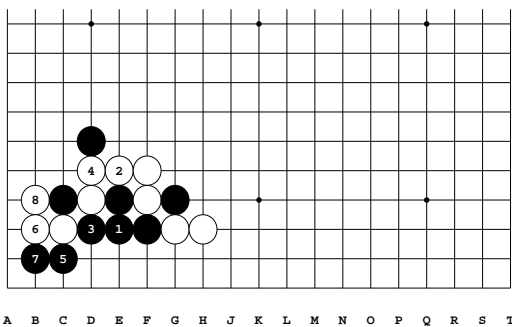
Variation 10 at move 3 in Variation 9: 1-2



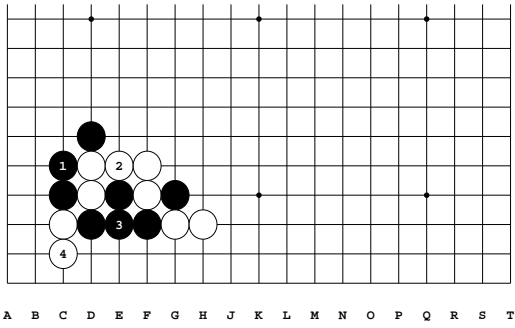
Variation 11 at move 3 in Diagram 2: 1-4



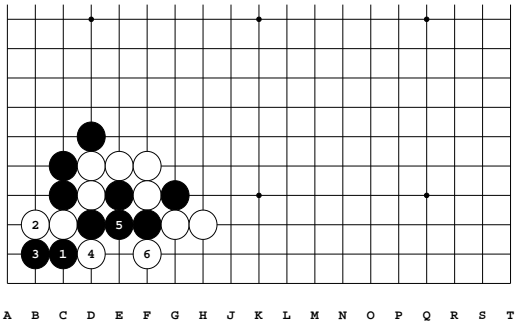
Variation 12 at move 3 in Variation 11: 1-2



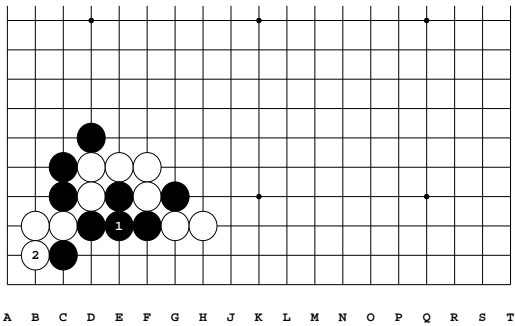
Variation 13 at move 3 in Diagram 2: 1-8



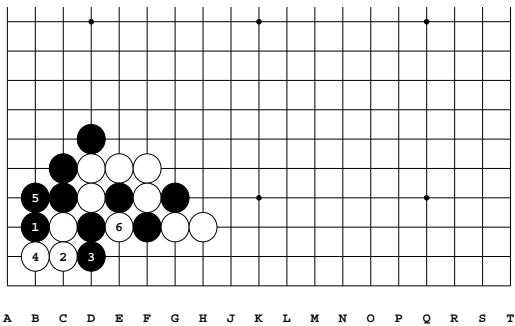
Variation 14 at move 5 in Diagram 2: 1-4



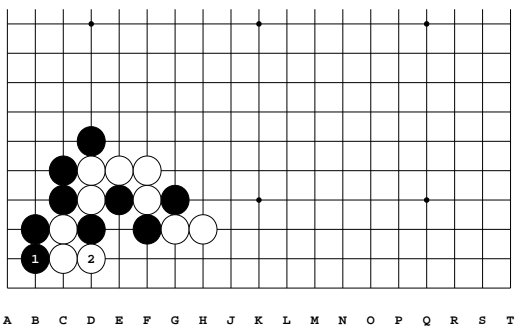
Variation 15 at move 3 in Variation 14: 1-6



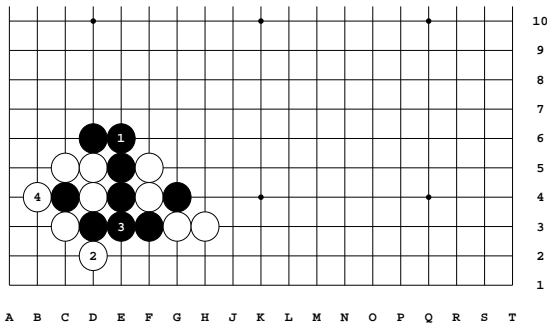
Variation 16 at move 3 in Variation 15: 1-2



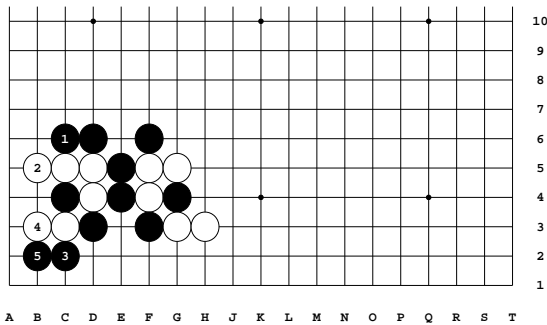
Variation 17 at move 3 in Variation 14: 1-6



Variation 18 at move 3 in Variation 17: 1-2

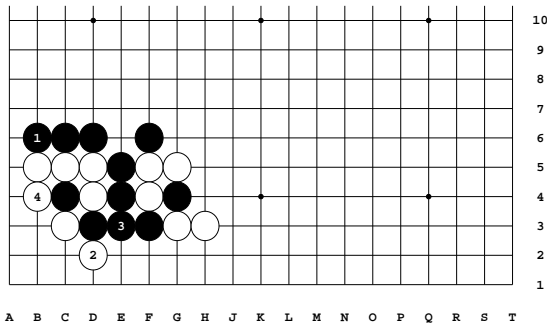


Variation 19 at move 7 in Diagram 2: 1-4

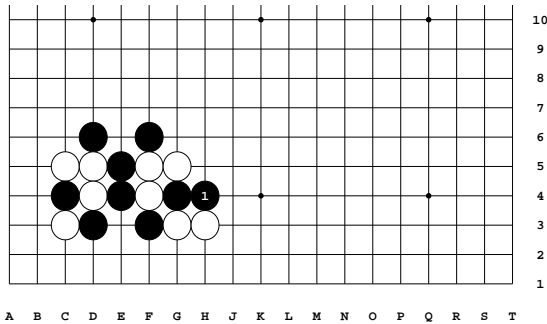


Variation 20 at move 9 in Diagram 2: 1-5

5: Also correct.



Variation 21 at move 3 in Variation 20: 1-4



Variation 22 at move 9 in Diagram 2: 1

1: This is also good, but Black can play in the corner first.