

Komi: 0.0

Diagram 1

Black to play.

<https://gogameguru.com/>

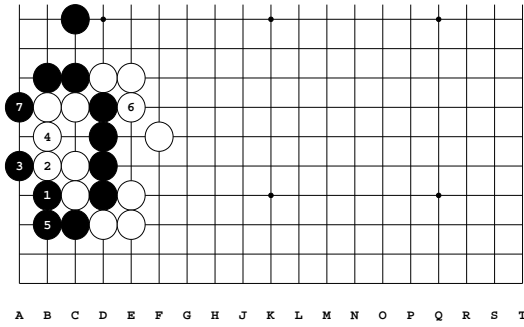
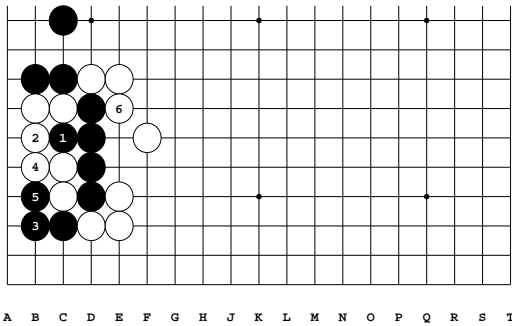
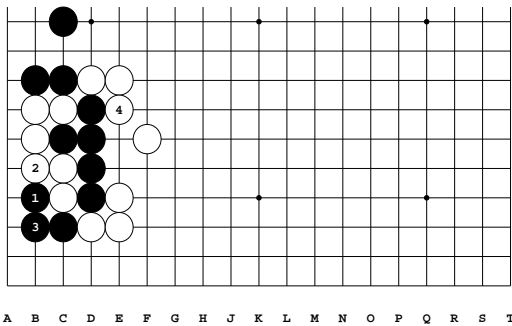


Diagram 2: 1-7

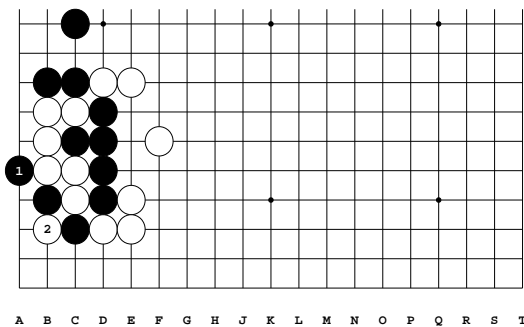
7: Correct



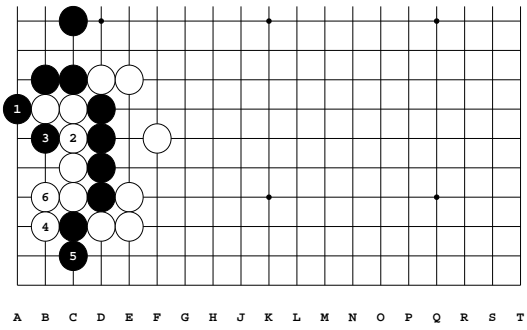
Variation 1 at move 1 in Diagram 2: 1-6



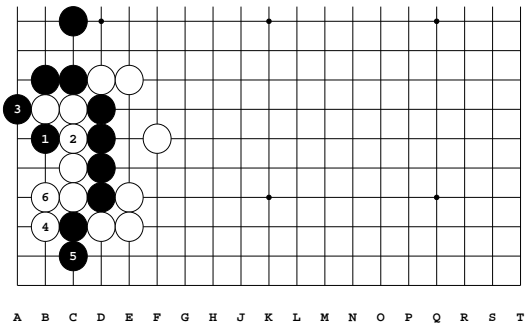
Variation 2 at move 3 in Variation 1: 1-4



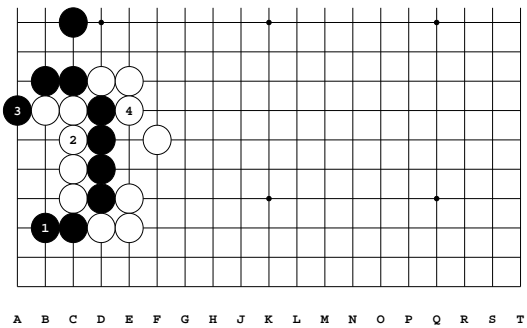
Variation 3 at move 3 in Variation 2: 1-2



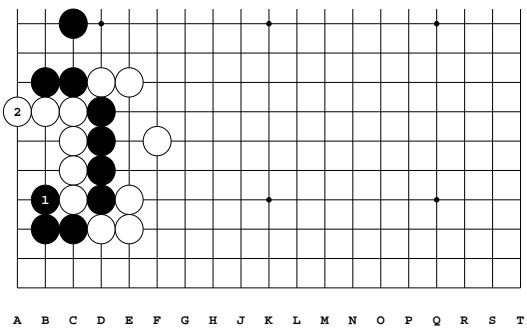
Variation 4 at move 1 in Diagram 2: 1-6



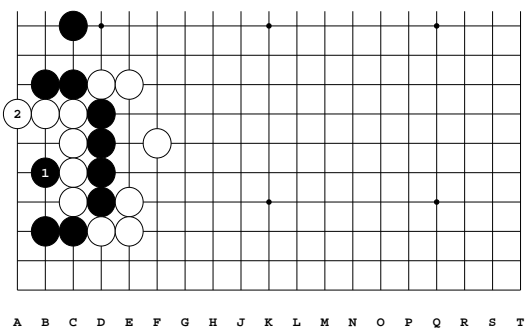
Variation 5 at move 1 in Diagram 2: 1-6



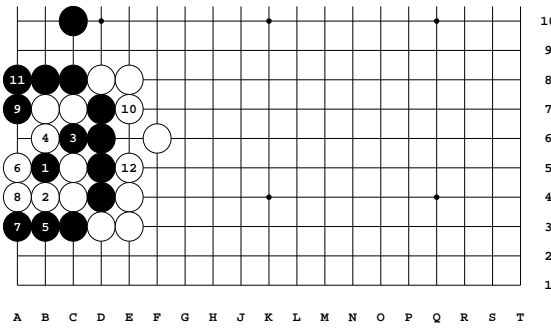
Variation 6 at move 1 in Diagram 2: 1-4



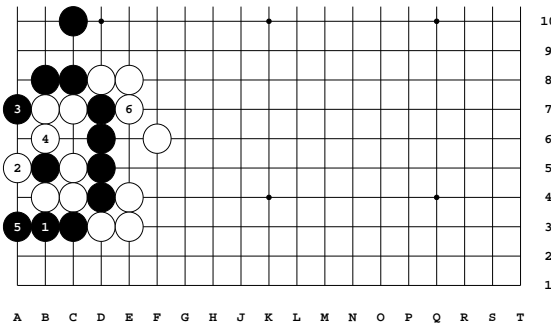
Variation 7 at move 3 in Variation 6: 1-2



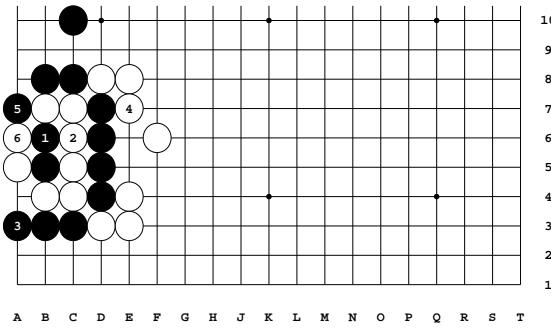
Variation 8 at move 3 in Variation 6: 1-2



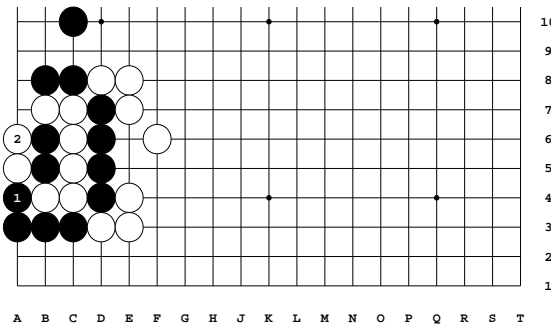
Variation 9 at move 1 in Diagram 2: 1-12



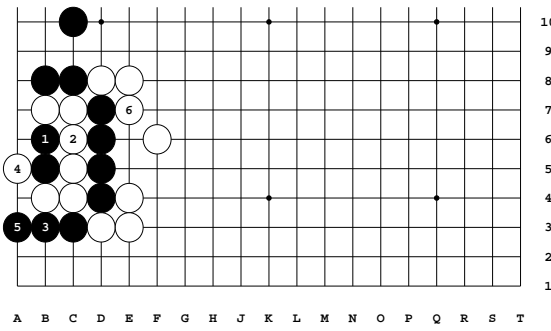
Variation 10 at move 3 in Variation 9: 1-6



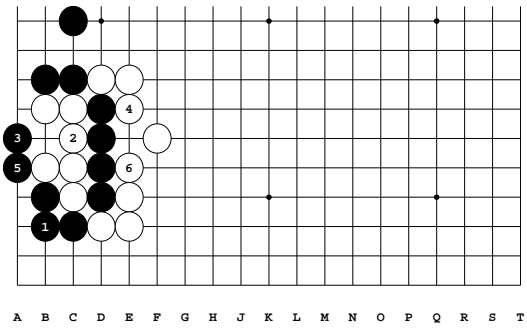
Variation 11 at move 3 in Variation 10: 1-6



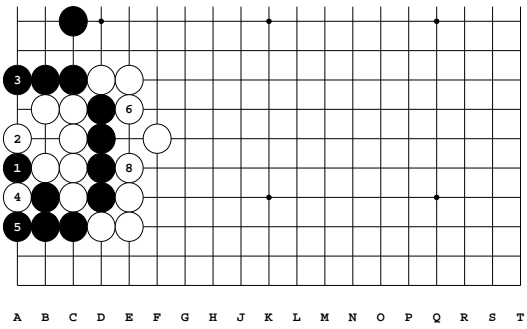
Variation 12 at move 5 in Variation 11: 1-2



Variation 13 at move 3 in Variation 9: 1-6

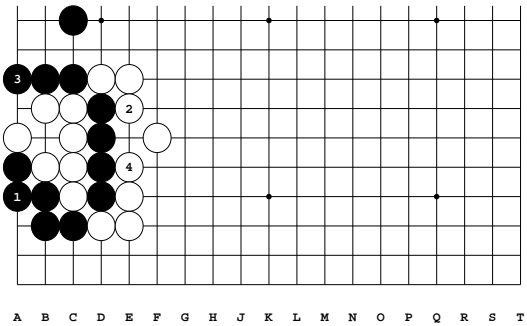


Variation 14 at move 3 in Diagram 2: 1-6

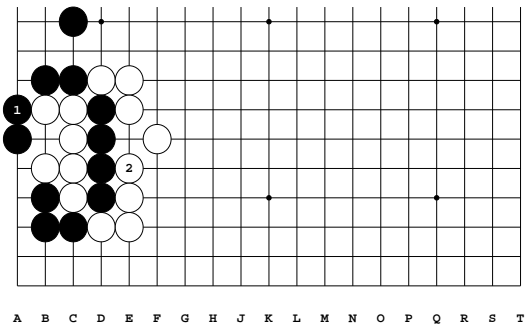


Variation 15 at move 3 in Variation 14: 1-8

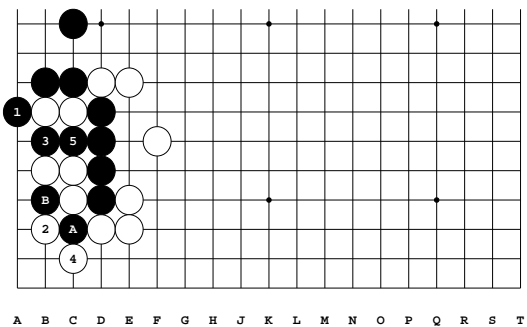
7 at 1



Variation 16 at move 3 in Variation 15: 1-4

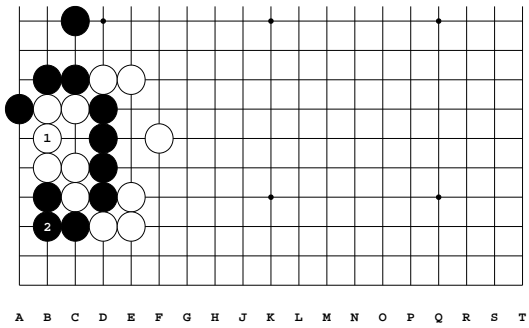


Variation 17 at move 5 in Variation 14: 1-2



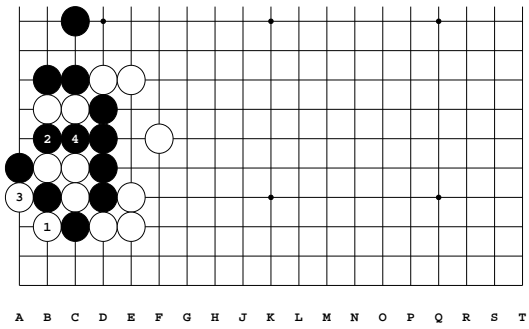
Variation 18 at move 3 in Diagram 2: 1-5

5: Also correct, but there's a slightly better way. You'd prefer to keep Black A on the board instead of Black B if possible, because there's more aji in Black A.



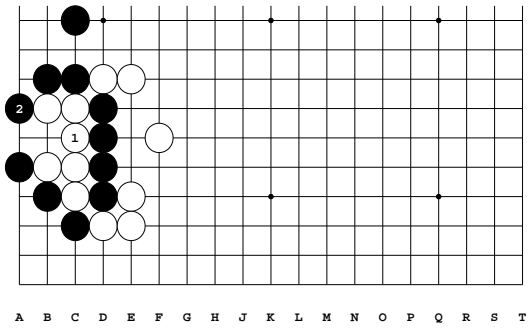
Variation 19 at move 2 in Variation 18: 1-2

2: Correct



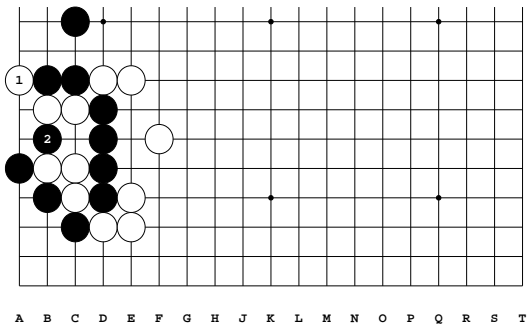
Variation 20 at move 4 in Diagram 2: 1-4

4: Correct



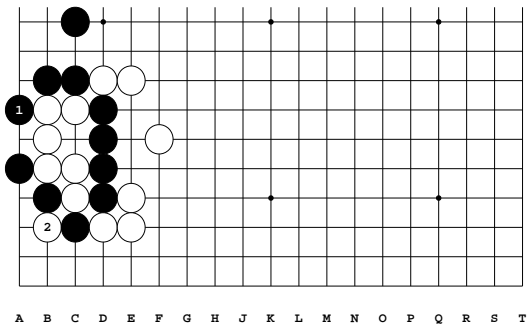
Variation 21 at move 4 in Diagram 2: 1-2

2: Correct

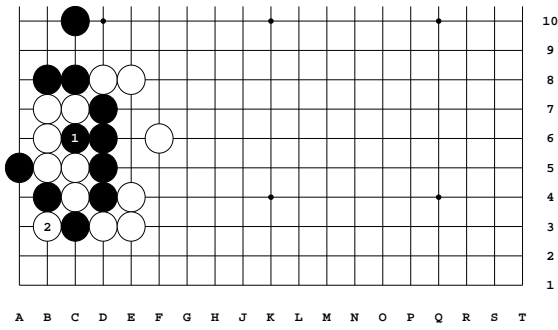


Variation 22 at move 4 in Diagram 2: 1-2

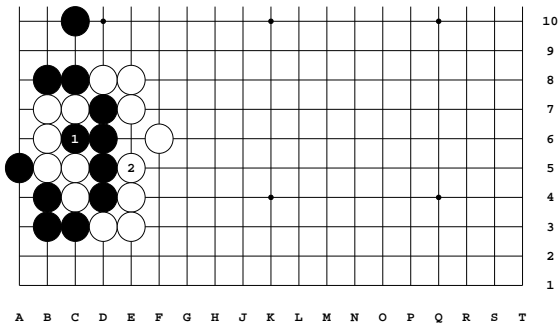
2: Correct



Variation 23 at move 5 in Diagram 2: 1-2



Variation 24 at move 5 in Diagram 2: 1-2



Variation 25 at move 7 in Diagram 2: 1-2